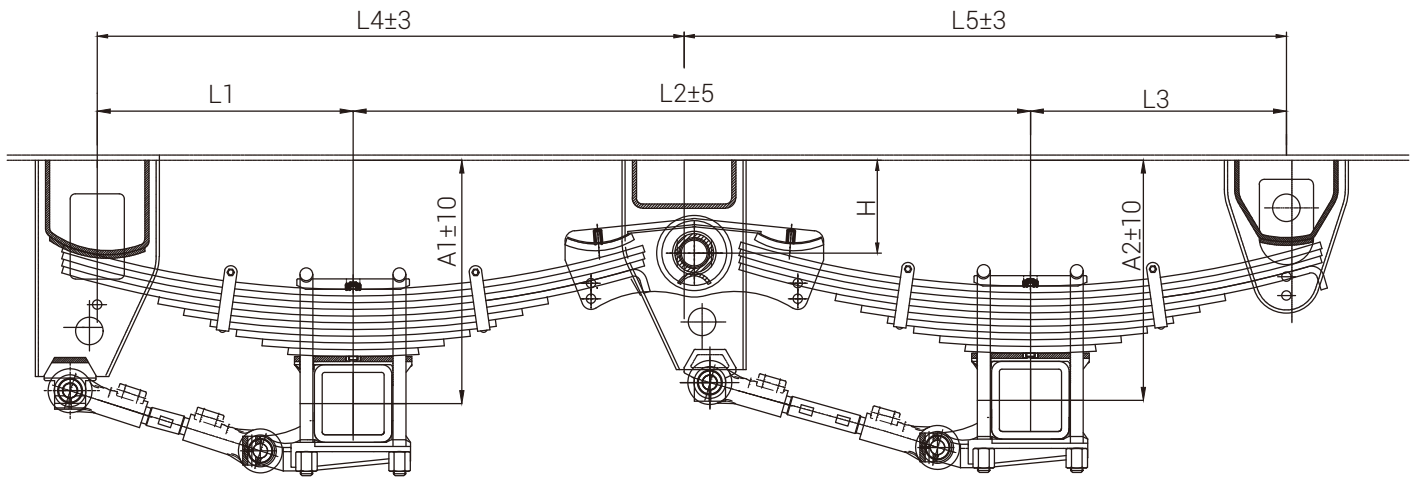




Lonely Lion

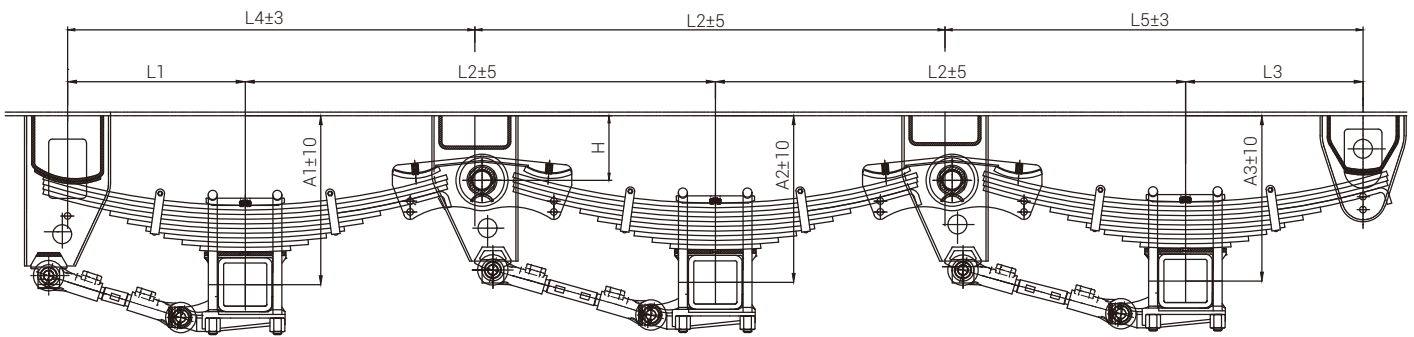
American Type Tandem Axle Overslung Suspension



Model	A1 (mm)	A2 (mm)	L1 (mm)	L2 (mm)	L3 (mm)	L4 (mm)	L5 (mm)	H (mm)	Axle load (kg)
MAX/TS/A/2/O/001	415	406	490	1310	490	1135	1155	130	13000*2
MAX/TS/A/2/O/002	435	426	490	1310	490	1135	1155	150	13000*2
MAX/TS/A/2/O/003	465	456	490	1310	490	1135	1155	180	13000*2
MAX/TS/A/2/O/004	495	486	490	1310	490	1135	1155	210	13000*2
MAX/TS/A/2/O/005	515	506	490	1310	490	1135	1155	230	13000*2
MAX/TS/A/2/O/006	535	526	490	1310	490	1135	1155	250	13000*2
MAX/TS/A/2/O/007	555	546	490	1310	490	1135	1155	270	13000*2
MAX/TS/A/2/O/008	585	576	490	1310	490	1135	1155	300	13000*2
MAX/TS/A/2/O/009	605	596	490	1310	490	1135	1155	320	13000*2



American Type Triple Axle Overslung Suspension

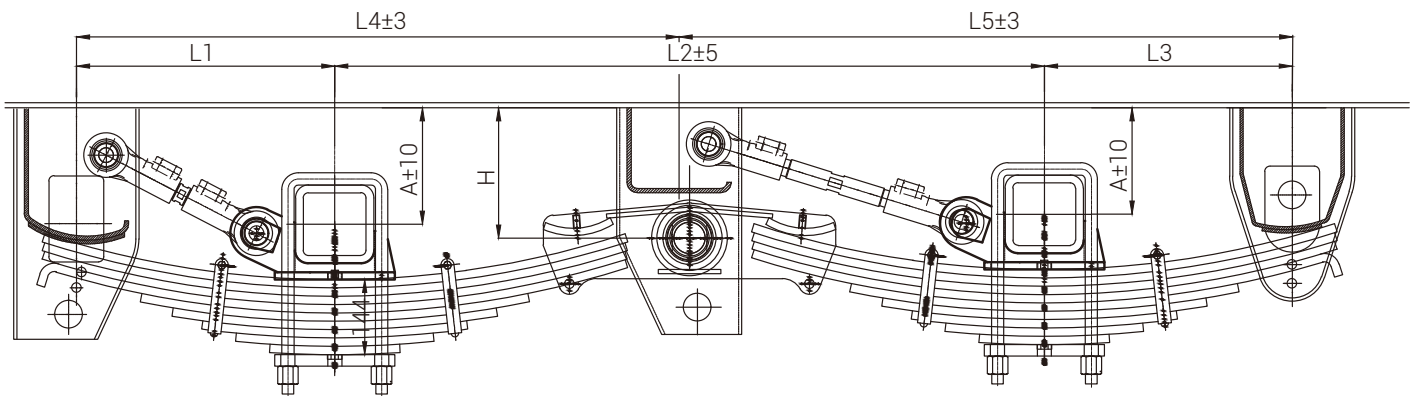


Model	A1 (mm)	A2 (mm)	A3 (mm)	L1 (mm)	L2 (mm)	L3 (mm)	L4 (mm)	L5 (mm)	H (mm)	Axle load (kg)
MAX/TS/A/3/O/001	415	406	397	490	1310	490	1135	1155	130	13000*3
MAX/TS/A/3/O/002	435	426	417	490	1310	490	1135	1155	150	13000*3
MAX/TS/A/3/O/003	465	456	447	490	1310	490	1135	1155	180	13000*3
MAX/TS/A/3/O/004	495	486	477	490	1310	490	1135	1155	210	13000*3
MAX/TS/A/3/O/005	515	506	497	490	1310	490	1135	1155	230	13000*3
MAX/TS/A/3/O/006	535	526	517	490	1310	490	1135	1155	250	13000*3
MAX/TS/A/3/O/007	555	546	537	490	1310	490	1135	1155	270	13000*3
MAX/TS/A/3/O/008	585	576	567	490	1310	490	1135	1155	300	13000*3
MAX/TS/A/3/O/009	605	596	587	490	1310	490	1135	1155	320	13000*3



Lonely Lion

American Type Tandem Axle Underslung Suspension

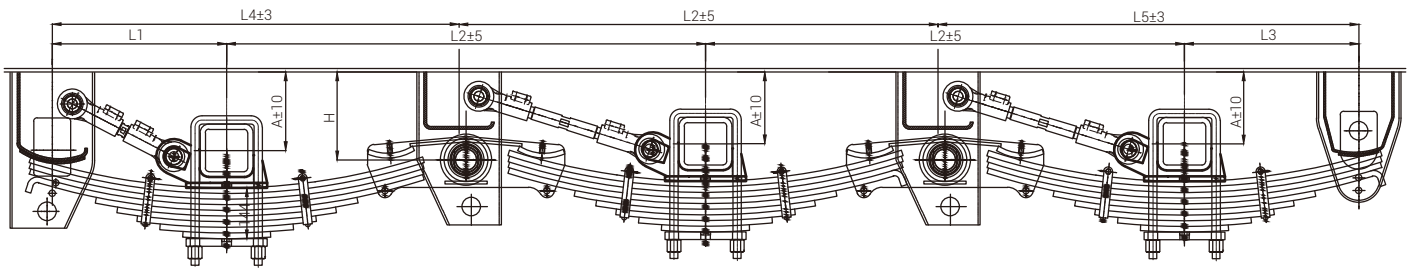


Model	A (mm)	L1 (mm)	L2 (mm)	L3 (mm)	L4 (mm)	L5 (mm)	H (mm)	Axle load (kg)
MAX/TS/A/2/U/001	180	490	1310	490	1130	1160	235	16000*2
MAX/TS/A/2/U/002	200	490	1310	490	1130	1160	255	16000*2
MAX/TS/A/2/U/003	220	490	1310	490	1130	1160	275	16000*2
MAX/TS/A/2/U/004	250	490	1310	490	1130	1160	305	16000*2
MAX/TS/A/2/U/005	270	490	1310	490	1130	1160	325	16000*2



Lonely Lion

American Type Triple Axle Underslung Suspension

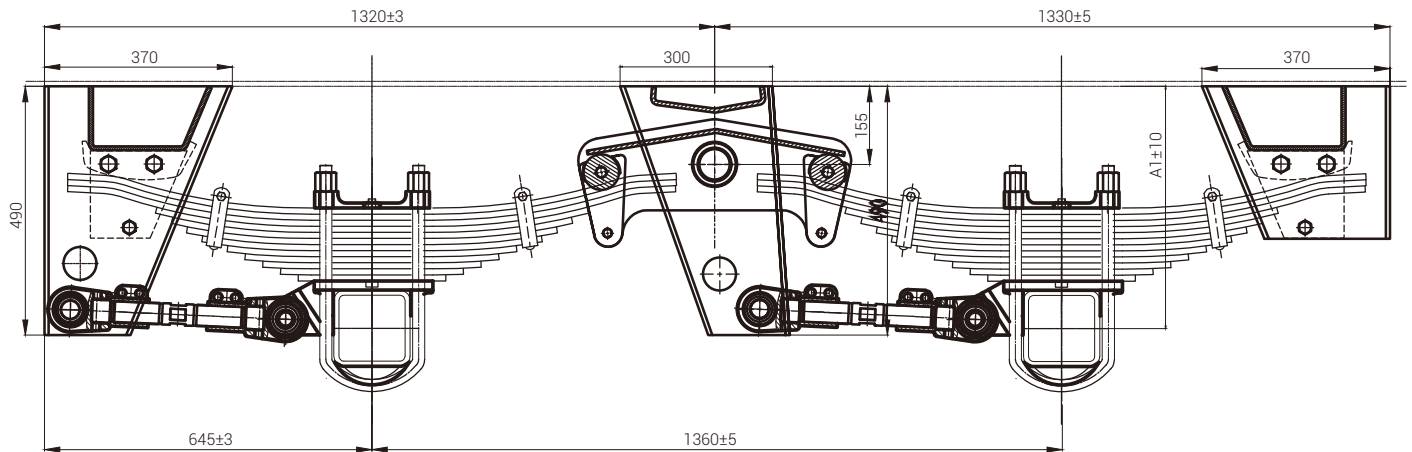


Model	A (mm)	L1 (mm)	L2 (mm)	L3 (mm)	L4 (mm)	L5 (mm)	H (mm)	Axle load (kg)
MAX/TS/A/3/U/001	180	490	1310	490	1130	1160	235	16000*3
MAX/TS/A/3/U/002	200	490	1310	490	1130	1160	255	16000*3
MAX/TS/A/3/U/003	220	490	1310	490	1130	1160	275	16000*3
MAX/TS/A/3/U/004	250	490	1310	490	1130	1160	305	16000*3
MAX/TS/A/3/U/005	270	490	1310	490	1130	1160	325	16000*3



Lonely Lion

German Type Tandem Axle Suspension for SAF

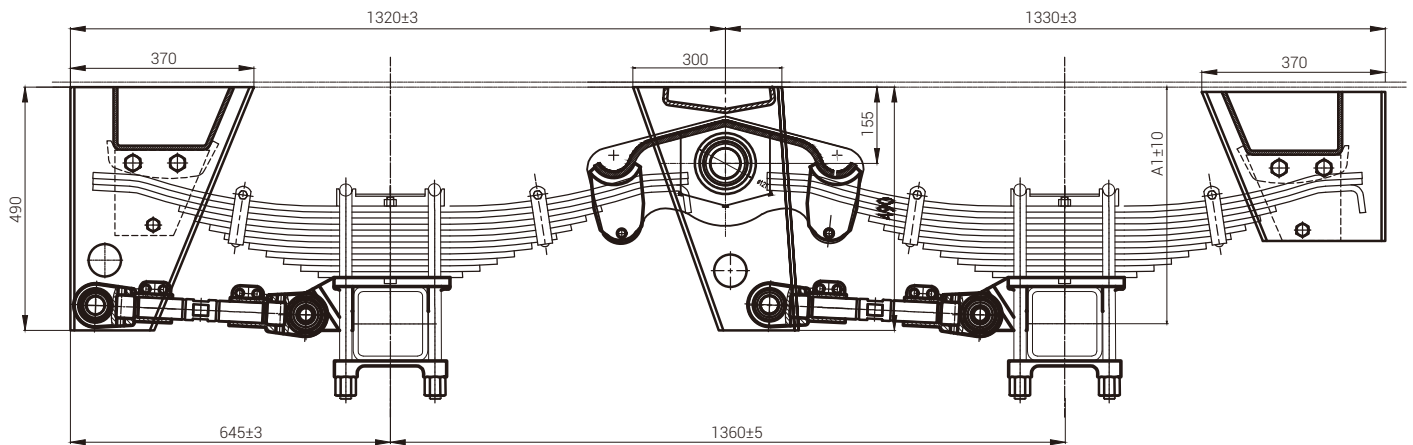


Model	Thickness (mm)	No. of Leaf Springs	Thickness of Leaf Springs (mm)	A1 (mm)	Axle Load
MAX/TS/G/2/O/SAF001	8	12	12	490	14000*2



Lonely Lion

German Type Tandem Axle Suspension for BPW

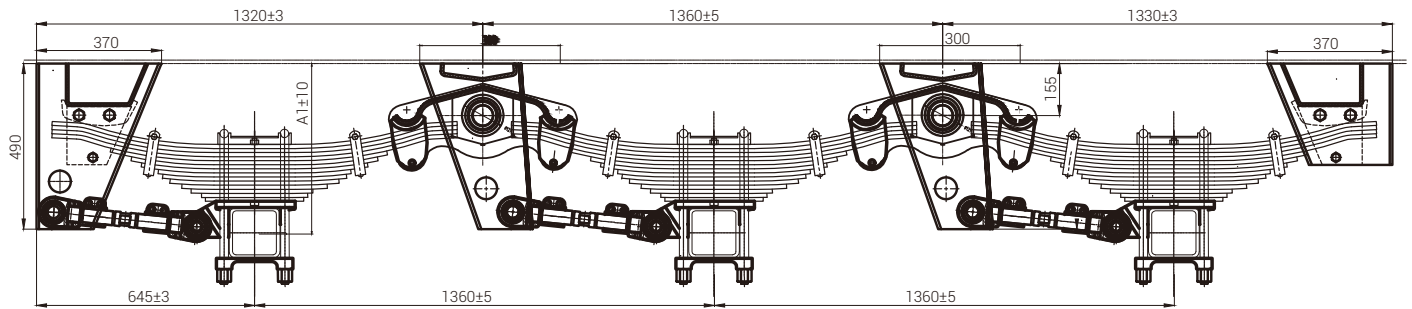


Model	Thickness (mm)	No. of Leaf Springs	Thickness of Leaf Springs (mm)	A1 (mm)	Axle Load
MAX/TS/G/2/O/BPW001	10	12	12	490	16000*2



Lonely Lion

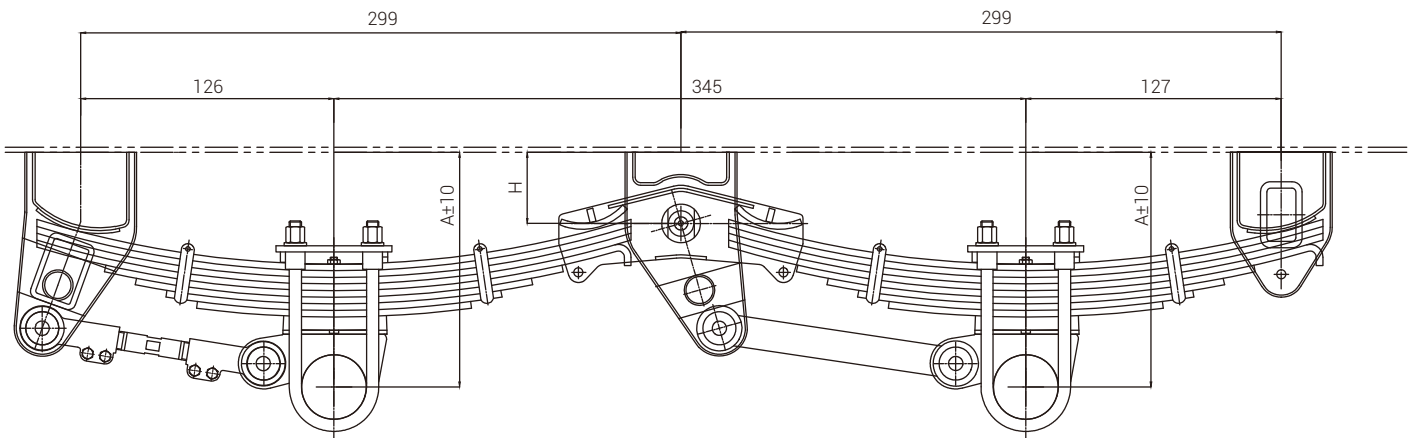
German Type Suspension for BPW



Model	Thickness (mm)	No. of Leaf Springs	Thickness of Leaf Springs (mm)	A1 (mm)	Axle Load
MAX/TS/G/3/O/BPW001	10	12	12	490	16000*3



American 68-type Tandem Axle Suspension

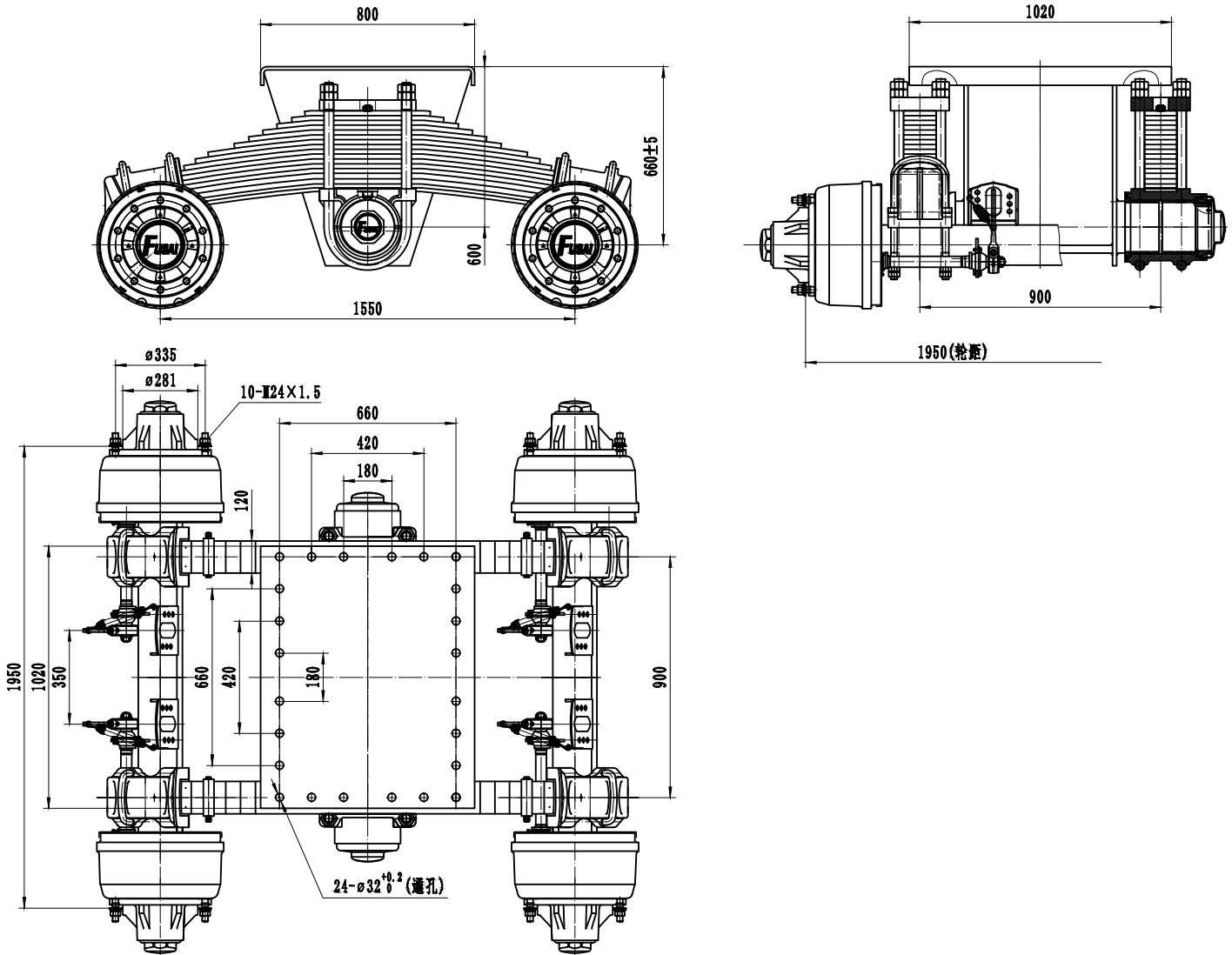


Model	A1 (mm)	L1 (mm)	L2 (mm)	L3 (mm)	L4 (mm)	L5 (mm)	H (mm)	Axle load (kg)
MAX/TS/A/68/2/O/001	440	483	1310	483	1138	1138	130	11000*2
MAX/TS/A/68/2/O/002	460	483	1310	483	1138	1138	150	11000*2
MAX/TS/A/68/2/O/003	490	483	1310	483	1138	1138	180	11000*2
MAX/TS/A/68/2/O/004	520	483	1310	483	1138	1138	210	11000*2
MAX/TS/A/68/2/O/005	540	483	1310	483	1138	1138	230	11000*2



Lonely Lion

Bogie Suspensions

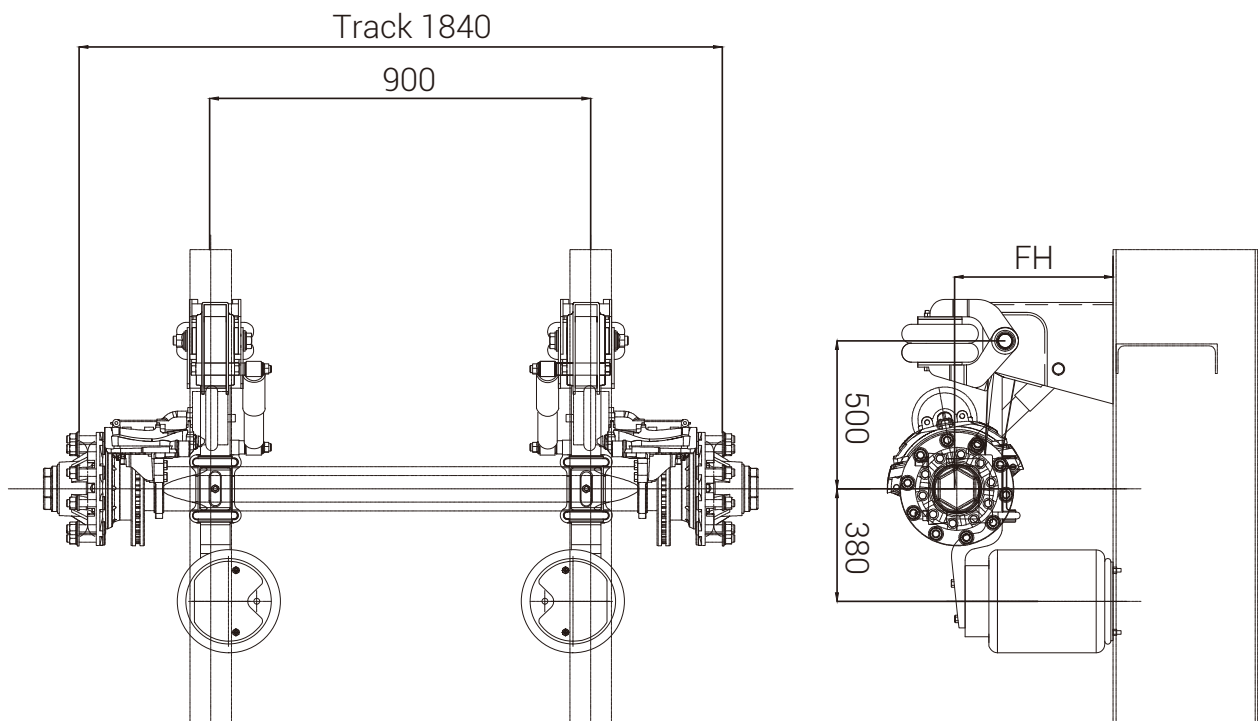


Model	Rated Load (kg)	Leaf Spring Type	Brake (mm)	Bearing	Leaf Spring Center Distance L3	Axle Trake (mm)	Trake	Wheel Fixing			Axle Weight (kg)
								Stud	P.C.D (mm)	H (mm)	
MAX/TS/B/001	24000	90*80	420*180	33118 33213	900	1400	1840	10*,22*1.5ISO	335	280.8	1900
MAX/TS/B/002	28000	120*17	420*200	32219 33215	900	1550	1840	10*,22*1.5ISO	335	280.8	2348
MAX/TS/B/003	32000	120*17	420*200	32222 33214	900	1550	1850	10*,22*1.5ISO	335	280.8	2404



Lonely Lion

Air Suspension



Model	The installation height	Track (mm)	Spring Seat Installation	Airbag	Steel ring	Tire model
				specification	type	
MAX/TS/A/001	210-310	1840	900	350	6.5-15	8.25R20
MAX/TS/A/002	210-310	1840	900	350	6.5-15	8.25R20
MAX/TS/A/003	210-310	1840	900	350	6.5-15	8.25R20
MAX/TS/A/004	210-310	1840	900	350	7.5V-20	10.00R20
MAX/TS/A/005	210-310	1840	900	350	7.5V-20	10.00R20