



Short Handle Semi Trailer Twist Lock

Material: High quality cast steel body and forged steel core. Steel handle with plastic knob

Finishing: Shot-blasted and red coating (color customizable)

Load: Minimum breaking loads tension 500 kN / shear 420 kN

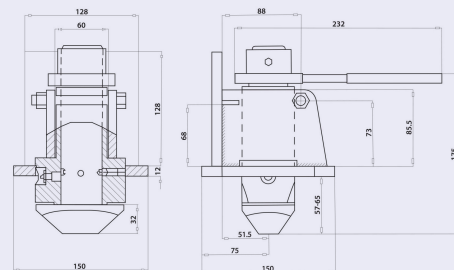
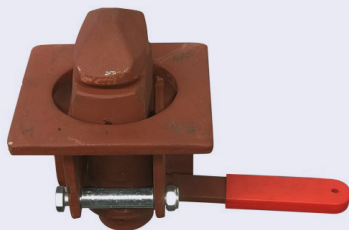
Mode: Dual function for manual and semi-automatic mode

Weight: 7.4Kgs

Handle: Standard short handle configuration

Customization: We can manufacture any customized twist locks upon your specifications.

Please feel free to contract us!



Long Handle Semi Trailer Twist Lock

Material: High quality cast steel body and forged steel core. Steel handle with plastic knob

Finishing: Shot-blasted and red coating (color customizable)

Load: Minimum breaking loads tension 500 kN / shear 420 kN

Mode: Dual function for manual and semi-automatic mode

Weight: 7.4Kgs

Handle: Long configuration to avoid combing rail on truck trailer

Customization: We can manufacture any customized twist locks upon your specifications.

Please feel free to contract us!

