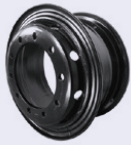




Lonely Lion



Wheel Size	P.C.D	Center Hole Diameter	Diameter of Bolt Hole NO.of Bolt Hole	Bolt Hole Type	Offset	Disc Thickness	Recommended Tyre
	mm	mm	mm		mm	mm	
9.00V-20	335	281	10-φ26	S/ISO	169	16/14	12.00R20



Wheel Size	P.C.D	Center Hole Diameter	Diameter of Bolt Hole NO.of Bolt Hole	Bolt Hole Type	Offset	Disc Thickness	Recommended Tyre
	mm	mm	mm		mm	mm	
8.5-20	335	281	10-φ26	S/ISO	166	16/14	12.00R20



Wheel Size	P.C.D	Center Hole Diameter	Diameter of Bolt Hole NO.of Bolt Hole	Bolt Hole Type	Offset	Disc Thickness	Recommended Tyre
	mm	mm	mm		mm	mm	
8.75-24	335	281	10-φ26	S/ISO	169/166	16/14	12.00R24
8.5-24	335	281	10-φ26	S/ISO	169/166	16/14	12.00R24



Wheel Size	P.C.D	Center Hole Diameter	Diameter of Bolt Hole NO.of Bolt Hole	Bolt Hole Type	Offset	Disc Thickness	Recommended Tyre
	mm	mm	mm		mm	mm	
7.00T-20	275	214	8-φ32	SR22/JAP	145/135	12/14	9.00R20
7.00T-20	275	214	8-φ26	S/ISO	141/139	12/14	9.00R20
7.00T-20	285.75	220	10-φ26	S/ISO	145	12/14	9.00R20
7.00T-20	285.75	222	10-φ32	SR22/JAP	149	12/14	9.00R20
7.00T-20	222.25	164	6-φ32	SR22/JAP	130	12	9.00R20
7.00T-20	285	221	8-φ32	SR22/JAP	153/150	12/14	9.00R20
7.00T-20	335	281	10-φ26	S/ISO	140	12/14	9.00R20
7.00T-20	285.75	220	10-φ26	S/ISO	151	12/14	9.00R20



Lonely Lion



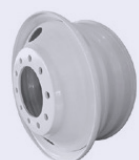
Wheel Size	P.C.D	Center Hole Diameter	Diameter of Bolt Hole NO.of Bolt Hole	Bolt Hole Type	Offset	Disc Thickness	Recommended Tyre
	mm	mm	mm		mm	mm	
8.25V-20	335	281	10- ϕ 26	S /ISO	162	16/14	11.00R20
8.25V-20	285.75	222	10- ϕ 32	SR22/JAP	162	16/14	11.00R20
8.25V-20	285.75	220	10- ϕ 26	S /ISO	162	16/14	11.00R20
8.25V-20	285	221	8- ϕ 32	SR22/JAP	162	16/14	11.00R20
8.25V-20	275	214	8- ϕ 32	SR22/JAP	162	16/14	11.00R20



Wheel Size	P.C.D	Center Hole Diameter	Diameter of Bolt Hole NO.of Bolt Hole	Bolt Hole Type	Offset	Disc Thickness	Recommended Tyre
	mm	mm	mm		mm	mm	
7.50V-20	285	221	8- ϕ 32	SR22/JAP	160/156/151	16/14/12	10.00R20
7.50V-20	335	281	10- ϕ 26	S/ISO	156/151/148	16/14/12	10.00R20
7.50V-20	275	214	8- ϕ 32	SR22/JAP	151/145	16/14/12	10.00R20
7.50V-20	275	220	10- ϕ 26	S/ISO	152	14	10.00R20
7.50V-20	275	214	8- ϕ 26	S/ISO	149/106	14	10.00R20
7.50V-20	285.75	220	10- ϕ 26	S/ISO	152/149	16/14	10.00R20
7.50V-20	285.75	222	10- ϕ 32	SR22/JAP	152/150	16/14	10.00R20



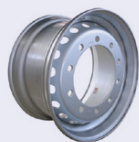
Wheel Size	P.C.D	Center Hole Diameter	Diameter of Bolt Hole NO.of Bolt Hole	Bolt Hole Type	Offset	Disc Thickness	Valve type	Recommended Tyre
	mm	mm	mm		mm	mm		
22.5X9.00	335	281	10- ϕ 26	S/ISO	161	16/14/12	V3-20-6	12R22.5 295/80R22.5 315/80R22.5
22.5X9.00	335	281	10- ϕ 27	SR18/DIN	161/164	16/14/12	V3-20-6	
22.5X9.00	285.75	220	10- ϕ 26	S/ISO	161	16/14/12	V3-20-6	
22.5X9.00	285.75	222	10- ϕ 32	SR22/JAP	161	16/14/12	V3-20-6	
22.5X9.00	285	221	8- ϕ 32	SR22/JAP	161/151	16/14/12	V3-20-6	
22.5X9.00	275	214	8- ϕ 32	SR22/JAP	161	16/14/12	V3-20-6	
22.5X8.25	335	281	10- ϕ 26	S/ISO	155/151	16/14/12	V3-20-4	11R22.5 285/60R22.5 295/80R22.5
22.5X8.25	285.75	222	10- ϕ 32	SR22/JAP	155/151	16/14/12	V3-20-4	
22.5X8.25	285.75	220	10- ϕ 26	S/ISO	155/151	16/14/12	V3-20-4	
22.5X8.25	285.75	220	10- ϕ 26	S/ISO	157/153	12	TR572 (Outbound)	
22.5X8.25	285	221	8- ϕ 32	SR22/JAP	155/151	16/14/12	V3-20-4	
22.5X8.25	275	214	8- ϕ 32	SR22/JAP	155/151/142	16/14/12	V3-20-4	



Wheel Size	P.C.D	Center Hole Diameter	Diameter of Bolt Hole NO.of Bolt Hole	Bolt Hole Type	Offset	Disc Thickness	Valve type	Recommended Tyre
	mm	mm	mm		mm	mm		
24.5X8.25	335	281	10- ϕ 26	S/ISO	155//151	16/14	V3-20-6	11R24.5



Lonely Lion



Wheel Size	P.C.D	Center Hole Diameter	Diameter of Bolt Hole NO.of Bolt Hole	Bolt Hole Type	Offset	Disc Thickness	Valve type	Recommened Tyre
	mm	mm	mm		mm	mm		
22.5X11.75	335	281	10-φ26	S/ISO	50/0/-12	16/14/12	TR570C	365/70R22.5 385/65R22.5
22.5X11.75	285	221	8-φ32	SR22/JAP	45	16/14/12	TR570C	



Wheel Size	P.C.D	Center Hole Diameter	Diameter of Bolt Hole NO.of Bolt Hole	Bolt Hole Type	Offset	Disc Thickness	Recommened Tyre
	mm	mm	mm		mm	mm	
5.50F-16	222.25	163	6-φ32	SR22/JAP	117/115	12 & 10 & 8	6.5-16
5.50F-16	222.25	163	6-φ32	SR22/JAP	106/98	12 & 10	6.5-16
5.50F-16	190	140	6-φ20.5	SR22/JAP	115/100	12 & 10	6.5-16
5.50F-16	190	140	6-φ20.5	SR22/JAP	65/22	12 & 10	6.5-16
5.50F-16	190	140	6-φ20.5	SR22/JAP	5/0	10	6.5-16
5.50F-16	203.2	140	6-φ32	SR22/JAP	115/109	10/8	6.5-16
5.50F-16	203.2	140	5-φ32	SR22/JAP	111/105	10	6.5-16
5.50F-16	203.2	133	5-φ32	SR22/JAP	111/105	10	6.5-16
5.50F-16	203.2	146	5-φ22.5	S/ISO	107	8	6.5-16
5.50F-16	203.2	146	5-φ29	SR22/JAP	105	10	6.5-16
5.50F-16	205	161	6-φ20.5	S/ISO	125/110	10/8	6.5-16
5.50F-16	180	141	6-φ20.5	S/ISO	115	10 & 8	6.5-16
5.50F-16	180	140	6-φ18.5	Cone 80°/ BSF 800	41	6	6.5-16
5.50F-16	180	140	6-φ24	SR22/JAP	41	6	6.5-16
5.50F-16	180	140	6-φ19	SR22/JAP	19	8	6.5-16
5.50F-16	180	140	6-φ19	S/ISO	19	8	6.5-16
5.50F-16	184.15	133	6-φ25.5	Cone 90°/ BSF 900	30	6	6.5-16
5.50F-16	184.15	133	5-φ29	Cone 90°/ BSF 900	30	6	6.5-16
5.50F-16	140	110.6	5-φ15	S/ISO	9/-8	8	6.5-16
5.50F-16	140	110	5-φ15	S/ISO	0	8	6.5-16
5.50F-16	208	150	5-φ32	SR22/JAP	111/105	10	6.5-16
5.50F-16	170	133	6-φ17.5	Cone 60°	25	6	6.5-16
5.50F-16	160	115	6-φ15	Cone 60°/ BSF 600	0	8	6.5-16
5.50F-16	139.7	107	6-φ15	Cone 60°/ BSF 60°	0	5	6.5-16
5.50F-16	140	94.5	5-φ18.5	SR18/DIN	26	8	6.5-16
5.50F-16	190	140	6-φ20.5	SR22/JAP	29	Dual 8+8	6.5-16
5.50F-16	190	140	6-φ20.5	SR22/JAP	40	Dual 6+6	6.5-16
5.50F-16	190	140	6-φ20.5	SR22/JAP	0	Dual 8+8	6.5-16



Lonely Lion



Wheel Size	P.C.D	Center Hole Diameter	Diameter of Bolt Hole NO.of Bolt Hole	Bolt Hole Type	Offset	Disc Thickness	Valve type	Recommended Tyre
	mm	mm	mm		mm	mm		
22.5X7.50	335	281	10-φ26	S/ISO	151/148/144	45640	V3-20-4	10R22.5 275/70R22.5
22.5X7.50	285.75	222	10-φ32	SR22/JAP	155/151	45640	V3-20-4	
22.5X7.50	285.75	220	10-φ26	S/ISO	151	45640	V3-20-4	
22.5X7.50	275	214	8-φ32	SR22/JAP	151	45640	V3-20-4	
22.5X7.50	285	221	8-φ32	SR22/JAP	155/151	45640	V3-20-4	



Wheel Size	P.C.D	Center Hole Diameter	Diameter of Bolt Hole NO.of Bolt Hole	Bolt Hole Type	Offset	Disc Thickness	Recommended Tyre
	mm	mm	mm		mm	mm	
6.5-16	222.25	163	6-φ32	SR22/JAP	30	Dual8+8	8.25R16
6.5-16	212	161	8-φ24.5	S/ISO	125	12/10	8.25R16
6.5-16	205	161	6-φ20.5	SR22/JAP	125	10	8.25R16
6.5-16	203.2	140	6-φ20.5	SR22/JAP	-35	Dual6+6	8.25R16
6.5-16	190	140	6-φ20.5	SR22/JAP	15	Dual6+6	8.25R16
6.5-16	190	140	6-φ20.5	SR22/JAP	35	Dual6+6	8.25R16
6.5-16	190	140	6-φ20.5	SR22/JAP	81	12/10	8.25R16
6.5-16	222	161	6-φ24.5	S/ISO	125	10	8.25R16
6.5-16	225	176	10-φ27	SR18/DIN	135/125	10	8.25R16



Wheel Size	P.C.D	Center Hole Diameter	Diameter of Bolt Hole NO.of Bolt Hole	Bolt Hole Type	Offset	Disc Thickness	Valve type	Recommended Tyre
	mm	mm	mm		mm	mm		
19.5X7.50	222.25	163	6-φ32	SR22/JAP	137/133/127	12	V3-20-4	265/70R19.5 245/70R19.5
19.5X7.50	275	214	8-φ32	SR22/JAP	139	12	V3-20-4	
19.5X7.5	245	204	6-φ32	S/ISO	129	12	V3-20-4	
19.5X6.75	222.25	163	6-φ32	SR22/JAP	135/115/108	12	PVR-51B	225/70R19.5
19.5X6.75	275	214	8-φ32	SR22/JAP	135	12	PVR-51B	
19.5X6.75	285	221	8-φ32	SR22/JAP	135	12	PVR-51B	
19.5X6.75	225	176	10-26	SR22	130	14	V3-20-4	



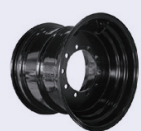
Lonely Lion



Wheel Size	P.C.D	Center Hole Diameter	Diameter of Bolt Hole NO.of Bolt Hole	Bolt Hole Type	Offset	Disc Thickness	Valve type	Recommended Tyre
	mm	mm	mm		mm	mm		
16X5.50K	203.2	146	5-φ32	SR22/JAP	107	8	PVR181	6.50R16
16X5.50K	203.2	146	5-φ29	SR22/JAP	107	8	PVR181	
16X5.50K	208	146	5-φ32	SR22/JAP	107	8	PVR181	
16X5.50K	190	140	6-φ20.5	SR22/JAP	115	10	PVR181	



Wheel Size	P.C.D	Center Hole Diameter	Diameter of Bolt Hole Hole NO.of Bolt Hole	Bolt Hole Type	Offset	Disc Thickness	Valve type	Recommended Tyre
	mm	mm	mm		mm	mm		
17.5X6.00	222.25	163	6-φ32	SR22/JAP	125/123/117	12/10	PVR-51 A	215/70R17.5 205/80R17.5 215/70R17.5
17.5X6.00	205	161	6-φ32	SR22/JAP	127	12	PVR-51A	
17.5X6.00	205	161	6-φ20.5	S/ISO	115	12	PVR-51A	
17.5X6.00	225	176	10-φ26	S/ISO	123	12	PVR-51A	
17.5X6.00	203.2	146	5-φ29	SR22/JAP	123/118/116	12/10	PVR-51A	
17.5X6.00	208	150	5-φ32	SR22/JAP	115	12	PVR-51 A	
17.5X6.00	225	225	10-26	SR22	123	14	V3-20-4	



Wheel Size	P.C.D	Center Hole Diameter	Diameter of Bolt Hole NO.of Bolt Hole	Bolt Hole Type	Offset	Disc Thickness	Valve type	Recommended Tyre
	mm	mm	mm		mm	mm		
26XDW20	335	281	10-ø27	SR18/DIN	50	12	TRCH3	23.1-26
26XDW20	425	370	10-ø24	SR18/DIN	67.5	18	TRCH	



Wheel Size	Recommended Tyre
22.5*7.50 支撑环	10R22.5 275/70R22.5
22.5*8.25 支撑环	11R22.5 285/60R22.5